

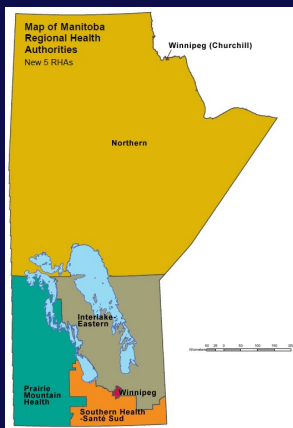
# Starting your practice in Manitoba



# CONGRATULATIONS

Congratulations on your graduation. You are embarking on a new phase in your life and the Health Workforce Secretariat is here to support you. The information provided in the next few pages is designed to get you started on your transition from student to practitioner in Manitoba.

The Province of Manitoba has five regional health authorities: Interlake-Eastern Regional Health Authority, Northern Regional Health Authority, Prairie Mountain Health, Southern Health/Santé Sud and Winnipeg Regional Health Authority (Churchill).



In Manitoba, Medical Staff privileges are granted on a provincial approach that is maintained by the Health Workforce Secretariat. Once you have accepted a position in the health region, you need to apply for a medical staff appointment and obtain privileges. Applications can be obtained through the regional health authority office

## Need a Specialist?

Manitoba's eReferral system is an electronic solution used to refer your patients to a specialist through your office EMR or via the web. Improving referral experience and reducing overall wait times, eReferral gets the right patient to the right specialist with the right requirements already met.

## Where do you start?

So where do you start now that you're finished your residency training? Here are some practical steps and useful tips to get you started on your path to practice Medicine in Manitoba.

## Beginning Practice

Your choices are many – but how do you decide where you want to practice? Here are a few of your options:

*Rural/Northern Manitoba:* Offering a wide variety of exciting career and lifestyle opportunities, rural and northern Manitoba awaits you. Practice opportunities can be very broad in scope and include clinic, primary care, hospital and emergency services. Sites vary in size from small to larger regional referral centres. All are well supported with a full array of community based programs, professional staff, technology and diagnostic supports. Contact a regional physician recruiter to discuss what options are available and where the high needs are.

### Northern Health Region

CMO: Dr. Hussam Azzam

Physician Recruiter: Marie MacPhail P:204-778-1569 e: [mmacphail@nrha.ca](mailto:mmacphail@nrha.ca)

### Interlake-Eastern Regional Health Authority

CMO: Dr. Myron Thiessen

Physician Recruiter: Lorri Beer P: 204-785-4720 e: [lbeer@ierha.ca](mailto:lbeer@ierha.ca)

### Southern Health

CMO: Dr. Denis Fortier

Physician Recruiter: Annette Dacquay P: 204 248-7259 [adacquay@southernhealth.ca](mailto:adacquay@southernhealth.ca)

Shannon Noel P:204-424-6082 e: [snoel@southernhealth.ca](mailto:snoel@southernhealth.ca)

### Prairie Mountain Health

CMO: Dr. Shaun Gauthier

Physician Recruiter: Michelle McKay P:204-759-4516 e: [mmckay@pmh-mb.ca](mailto:mmckay@pmh-mb.ca)

### J.A. Hildes Northern Medical Unit

Recruitment Coordinator: Kathy Harlos P:204-789-3771 e: [kathy.harlos@umanitoba.ca](mailto:kathy.harlos@umanitoba.ca)

*Winnipeg:* choices range from Primary Care, in-hospital care, low-risk obstetrics, emergency care, academic opportunities. Maybe you want a Monday to Friday work week and have a regular patient load – Winnipeg Access Centres offer a multidisciplinary approach to family medicine that may be right for you. Interested in teaching? Junior faculty positions offer the ability to teach and participate in research as well as receive excellent clinical mentoring and faculty development. Want to continue to follow your patients as they require hospital admission? [Hospital privileges](#) are available at Concordia Hospital, Seven Oaks General Hospital, St. Boniface Hospital and Victoria Hospital.

### Winnipeg Regional Health Authority/Churchill

CMO: Dr. Brock Wright

Physician Recruiter: Nancy Green P: 204-926-8037 e: [ngreen3@wrha.mb.ca](mailto:ngreen3@wrha.mb.ca)

## Liability Insurance

As a resident you will have liability coverage through the CMPA. Liability coverage is required in the event of medico-legal difficulty. To transition to independent practice you will need to update your coverage. Contact CMPA by calling 1-800-267-6522. You will need to provide them with the following information: specialty of practice, effective start date, province of practice, hospital or clinic location and notify them once you obtain your CPSM license number. The CPSM license number is not required on your first contact with CMPA.

### DID YOU KNOW?

The PGME office notifies the College of completion of your training and you can then schedule an interview to get your new license before you commence work as a physician...

**REMEMBER**—if you are working in a region and receiving remuneration, let the region know that you are incorporated!

**NOTE:** If you are applying for hospital privileges, a Physician Registration Form will be sent to you as part of your application package.

**Doctors Manitoba is also a great resource for billing advice!**



## Get Licensed

As a medical resident in Manitoba you are enrolled on the educational register with the [College of Physicians and Surgeons of Manitoba](#) (CPSM). Once you complete your training, your next step is to apply for [Full registration](#). Full registration allows you to practice independently as a physician in Manitoba. To obtain full registration you must be a Licentiate of the Medical Council of Canada and certification with the College of Family Physicians of Canada.

In the spring of your last year of training, the College will send you an application for full registration. Complete the application and return it to the College with your choice of an interview date. The College will confirm the date and you will meet with them to obtain your license.

Full registration: <http://cpsm.mb.ca/registration/categories-of-registration/full-registration/family-practice-canadian-or-us-graduates>

## Incorporating your practice

Incorporating your practice is a decision best made with a legal/financial advisor who can discuss the advantages and disadvantages. Only a physician licensed by the CPSM is eligible to be a director or voting shareholder of a medical corporation. Information on incorporation in Manitoba can be found at the College of Physicians & Surgeons website: <http://cpsm.mb.ca/registration/medical-corporations/registration-process>.

## Obtain a Billing Number

Depending on how you practice you may or may not require a billing number. If you plan on doing fee-for-service (FFS) work or shadow billing in a clinic or hospital setting then you need to fill out a Physician Registration Form. You will need to first know your location of work and what services you will provide (FFS or salary or both). Once established, your location of practice will require you to fill out a letter of agreement (FFS and salaried) and an electronic funds transfer form (FFS only). Contact Manitoba Health Practitioner Registry at:

P: 204-788-2567 F: 204-942-2356

Email: [practitionerregistry@gov.mb.ca](mailto:practitionerregistry@gov.mb.ca)

## Other Useful Links

The **MB Healthcare Providers Network**—connecting healthcare professionals to information and careers in Manitoba. **Launching June 24, 2015.** [www.healthcareersmanitoba.ca](http://www.healthcareersmanitoba.ca)

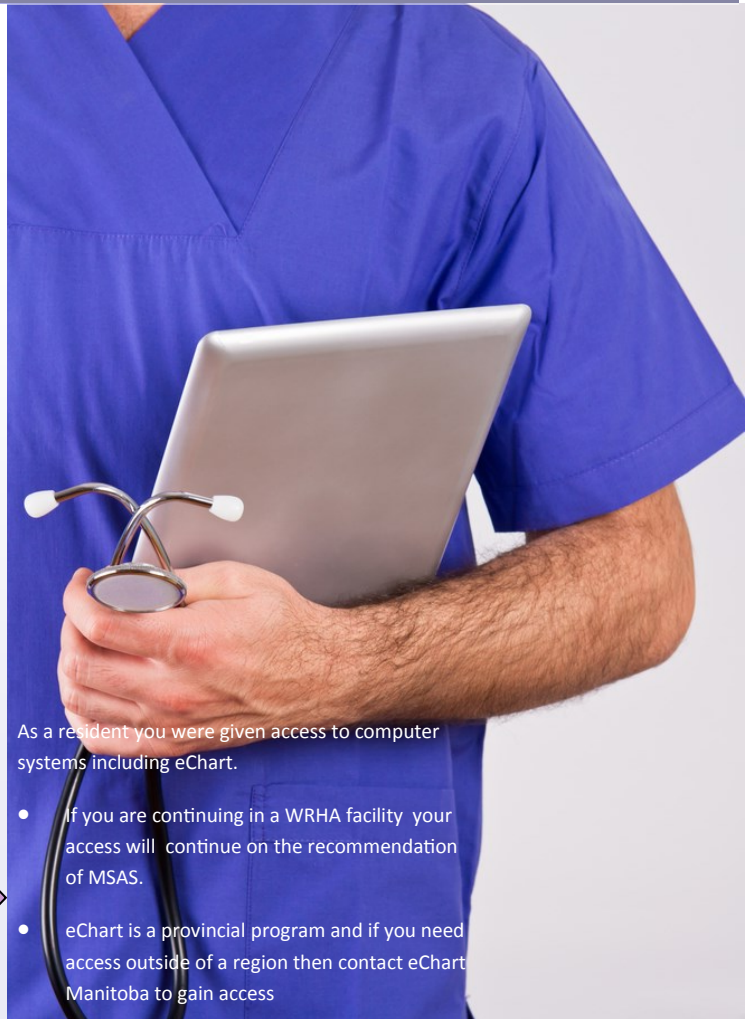
The **Canadian Medical Association** is a great resource for information on setting up your own practice. See their [New in Practice 2015](https://www.cma.ca/En/Pages/new-in-practice-guide-2015.aspx) guide. <https://www.cma.ca/En/Pages/new-in-practice-guide-2015.aspx>

The **College of Family Physicians of Canada (CFPC)**. A great resource for transitioning to practice. Check out their First Five Years in Practice guide. <http://www.cfpc.ca/FirstFiveYears/>

**Doctors Manitoba**—a professional association representing the economic, health policy and health promotion interests of the province's medical doctors. [www.docsmb.org/](http://www.docsmb.org/)

**MD Financial Management**—helping physicians with their wealth management needs. <https://mdm.ca/>.

**EChart Manitoba**—a secure electronic system with access to patient lab results, prescription information, x-ray reports, immunization. <http://www.echartmanitoba.ca>.



As a resident you were given access to computer systems including eChart.

- If you are continuing in a WRHA facility your access will continue on the recommendation of MSAS.
- eChart is a provincial program and if you need access outside of a region then contact eChart Manitoba to gain access

*Starting your practice in Manitoba*

## HEALTH WORKFORCE SECRETARIAT

4th flr, 650 Main Street  
Winnipeg MB R3B 1E2

P:204-786-7179

For health career opportunities: [www.healthcareersmanitoba.ca](http://www.healthcareersmanitoba.ca)